

Electrical characteristics



FANSO

PRIMARY LITHIUM BATTERY

2CR5 6.0V

Electrical characteristics

Typical values relative to cells stored for one year

⦿ Nominal capacity	1500mAh
Discharged capacity at 5mA, +25°C, 4V cut off.	
⦿ Nominal voltage	6.0V
⦿ Max. recommended continuous current	1000mA
Discharged to 4V at +25°C permitting 50% of the Nominal capacity to be achieved	
⦿ Max. Pulse current	2500mA
15 seconds at 25°C drained with 50% of the nominal capacity, yield voltage reading above 4V. The value may vary with the pulse characteristics, the temperature and the cell's previous history	
⦿ Storage	Max 30°C
⦿ Operating temperature range	-40~+70°C
⦿ Weight	≈38g

Warning

Don't charge crush, disassemble, expose contents to water, heat above 100°C, or may lead to explosion, burn or goods leakage. Discarded battery should be buried deeply to the ground.

Key features

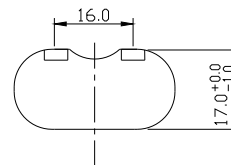
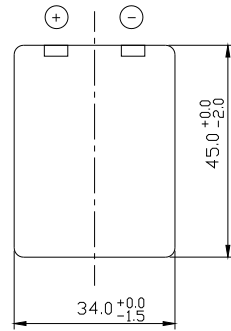
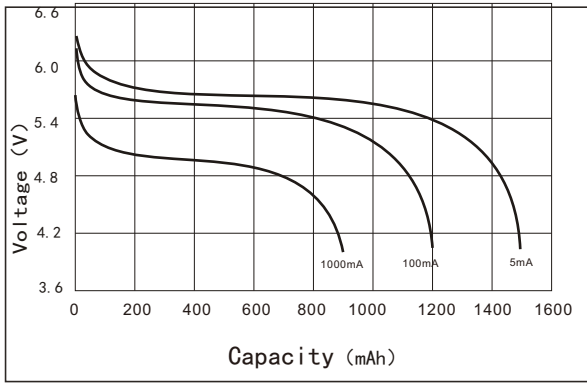
- High and stable operating voltage
- Long shelf life Annual self-discharge rate lower than 2% at +20°C
- Hermetic Sealing
- Compliant with IEC 86-4 safety standard
- Non-restricted for transport

Main applications

- active tags
- Alarms or security equipment
- Smoke detector
- Memory backup
- Real time clock
- Professional electronic equipment
- Medical equipment
-

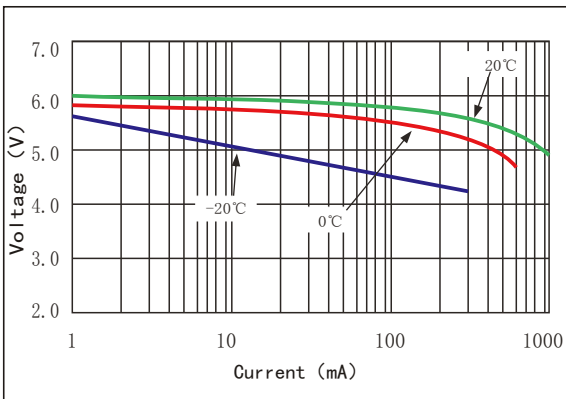
2CR5 1500mAh

Discharge characteristics at 25°C

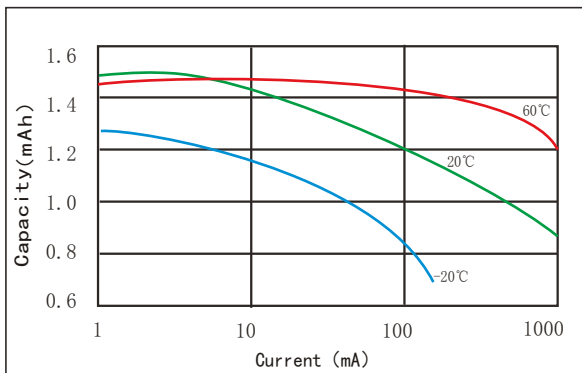


Dimensions in mm

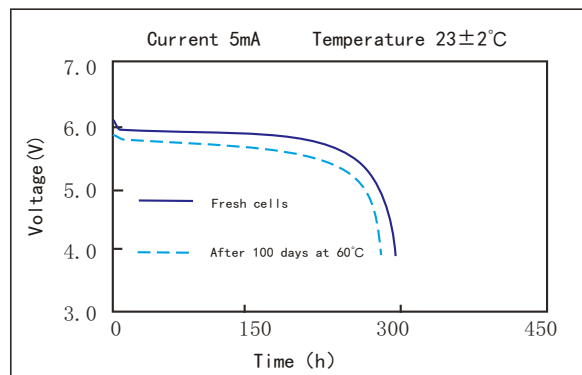
Voltage VS Current & Temperature Curve



Capacity VS Current & Temperature Curve



Storage characteristics



Data in this page is subject to change without notice and becomes contractual only after written confirmation by Fanso

Wuhan Fanso Technology Co.,LTD

Address: No.1 Sitai Industrial Park, Yongfeng Avenue, Hanyang District, Wuhan City, China.

Tel: 86 27 84452919

Fax: 86 27 84453116

Post Code: 430051

<http://www.fansobattery.com> E-mail: overseas@fansobattery.com