

## Electrical characteristics



FANSO

## PRIMARY LITHIUM BATTERY

2CR5 6.0V

### Electrical characteristics

Typical values relative to cells stored for one year

⦿ Nominal capacity	1500mAh
Discharged capacity at 5mA, +25°C, 4V cut off.	
⦿ Nominal voltage	6.0V
⦿ Max. recommended continuous current	1000mA
Discharged to 4V at +25°C permitting 50% of the Nominal capacity to be achieved	
⦿ Max. Pulse current	2500mA
15 seconds at 25°C drained with 50% of the nominal capacity, yield voltage reading above 4V. The value may vary with the pulse characteristics, the temperature and the cell's previous history	
⦿ Storage	Max 30°C
⦿ Operating temperature range	-40~+70°C
⦿ Weight	≈38g

### ⚠ Warning

**Don't charge crush, disassemble, expose contents to water, heat above 100°C, or may lead to explosion, burn or goods leakage. Discarded battery should be buried deeply to the ground.**

### Key features

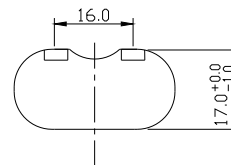
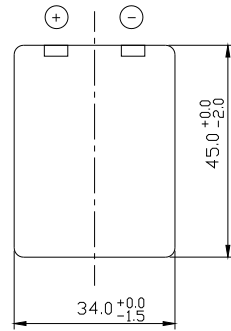
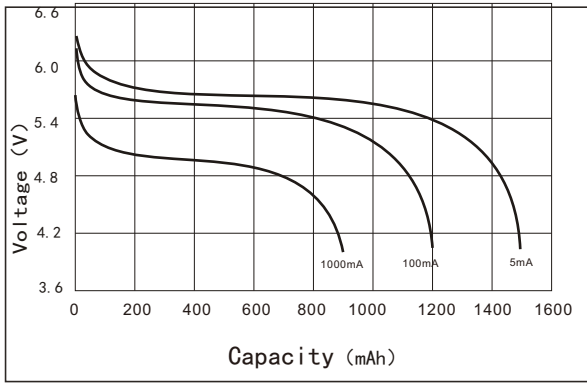
- High and stable operating voltage
- Long shelf life Annual self-discharge rate lower than 2% at +20°C
- Hermetic Sealing
- Compliant with IEC 86-4 safety standard
- Non-restricted for transport

### Main applications

- active tags
- Alarms or security equipment
- Smoke detector
- Memory backup
- Real time clock
- Professional electronic equipment
- Medical equipment
- .....

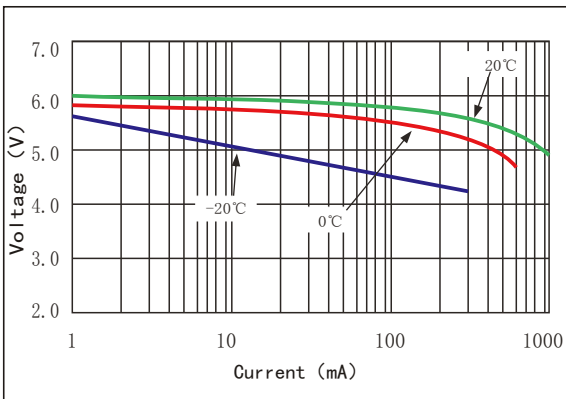
# 2CR5 1500mAh

## Discharge characteristics at 25°C

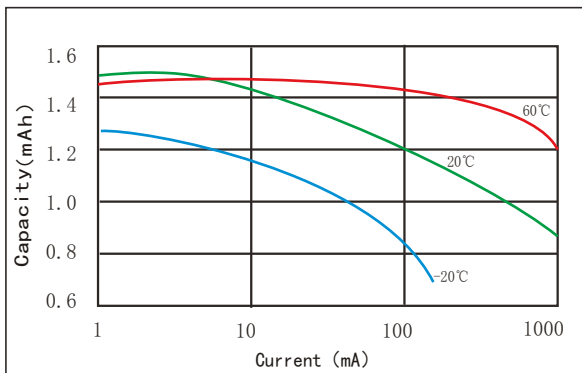


Dimensions in mm

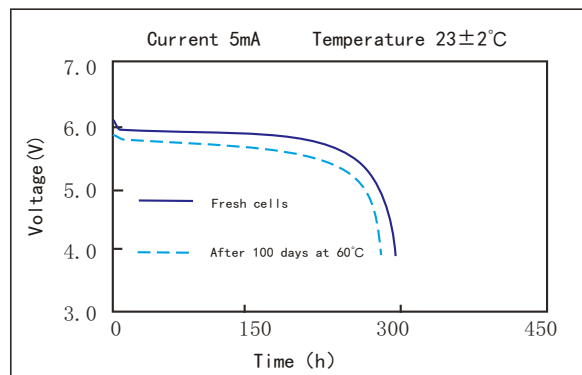
## Voltage VS Current & Temperature Curve



## Capacity VS Current & Temperature Curve



## Storage characteristics



Data in this page is subject to change without notice and becomes contractual only after written confirmation by Fanso