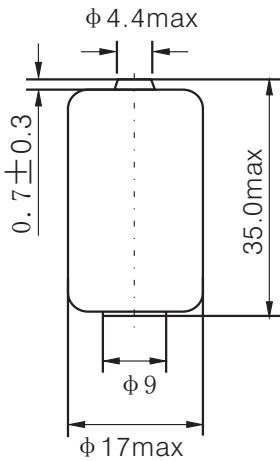


TYPE ER17335S

TECHNICAL DATA

(Typical values @+150C for batteries stored for one year or less)

- ▶ Nominal capacity 1200mAh
- ▶ Nominal voltage 3.6V
- ▶ Max continuous discharge current 80mA
- ▶ Weight 19g
- ▶ Volume 8cc
- ▶ Operate temperature -20~150°C



Dimensions in mm

S/: STANDARD

Available terminations:

- /P axial pins
- /T /PT2 radial pins
- /PT/TP polarized tabs

